

LAUSANA  
FOIRE D'ART

**SUIZA**

30 OCT. AU 2 NOV.

Stand 42

# CATA LOGO 2025

October 24-26

**HILVERSUM**

Países Bajos

17 au 19  
octobre 2025

**PARIS**

CARROUSEL  
DU LOUVRE

Stand E 31

IMAGINARTE  
GALLERY



**Organiza:**

ImaginArte Gallery  
[www.imaginartegallery.com](http://www.imaginartegallery.com)  
[@imaginarte.bcn](https://www.instagram.com/imaginarte.bcn)

**Dirección:**

María Victoria Serna Bossel

**Diseño y maquetación:**

ImaginArte Gallery

# Declan David



**"YERETTE"**  
45 X 60 CM  
ACRYLIC PAINT AND SPRAY PAINT  
€ 1.245,-

YERETTÊ WAS BORN FROM A DEEP SENSE OF LONGING AND LOVE FOR TRINIDAD, WHERE I WAS RAISED. WHILE CREATING THIS PIECE, I THOUGHT A LOT ABOUT THE DUALITY OF BEAUTY AND BOUNDARY, PARTICULARLY AS IT RELATES TO BLACK IDENTITY AND PERSONAL SPACE.

THE WOMAN IN THE PAINTING IS A SPIRITUAL STAND-IN FOR THE ISLAND ITSELF. HER GAZE IS CALM BUT FIRM, INVITING YET GUARDED. I WANTED HER TO FEEL DYNAMIC YET ETHEREAL, ALMOST UNTOUCHABLE, WITH HER PRESENCE ROOTED IN THE WARMTH OF TRINIDADIAN SUNSETS. THE RED, ORANGE, AND BLUE PALETTE CAME DIRECTLY FROM THE SKIES I REMEMBER GROWING UP UNDER. THE PIECE IS NAMED AFTER YERETTÊ, A HUMMINGBIRD SANCTUARY IN TRINIDAD. THE NAME TIES INTO THE WORK BY EVOKING THE DELICATE BALANCE BETWEEN FREEDOM AND PROTECTION FOUND IN NATURE, WHICH REFLECTS THE CAREFUL NEGOTIATION OF PERSONAL SPACE AND RESPECT.

THE WHITE SNAKE IN HER HAIR IS WHERE THE PIECE BECOMES PROTECTIVE. IT SYMBOLIZES THE CONSTANT NEGOTIATION BLACK PEOPLE, ESPECIALLY WOMEN, FACE WHEN IT COMES TO THEIR BODIES AND THEIR SPACE. THE SNAKE IS NOT AGGRESSIVE; IT IS A WARNING, A GRACEFUL LINE BETWEEN ADMIRATION AND OVERSTEPPING. IT ALSO REFERENCES THE ALL-TOO-COMMON ISSUE OF PEOPLE TOUCHING BLACK HAIR WITHOUT CONSENT, AN EXPERIENCE I WANTED TO ADDRESS WITHOUT MAKING THE PAINTING FEEL HEAVY OR CONFRONTATIONAL.



# Christopher Brocklebank



**"A DECLINED INVITATION FOR  
PEACE"**  
OIL PAINTING ON CANVAS  
50 X 40 CM  
€ 600,-

**FOR THIS PIECE, I REALLY WANTED TO PLAY AROUND WITH CONCEPTS OF SHOCK VALUE AND ETIQUETTE, DEMONSTRATING THE DESTRUCTION OF SOMETHING DELICATE WITH AN ATTITUDE OF SNOBBERY. AT FIRST I ORIGINALLY THOUGHT OF PAINTING A BIG OLD BUTCHERS KNIFE BUT I DIDN'T THINK IT FITTED THE SCENE. I OPTED FOR A DAGGER INSTEAD, WITH GOLD FITTINGS AND A PEARL HANDLE TO SYMBOLISE THAT UPPER CLASS STYLE I WANTED. THE CIGARETTE THEN BECAME MY CHOICE TO ADD A LITTLE BARBARISM, SHOWING THAT NO MATTER HOW MUCH CLASS ONE HIDES BEHIND, WE ARE ALL STILL ANIMALS MADE OF THE SAME FLESH AND BONE**



**"KNUCKLE SANDWICH"**  
**OIL PAINTING ON CANVAS**  
**50 X 40 CM**  
**€ 600,-**

**"KNUCKLE SANDWICH" IS A BOLD, SURREAL OIL PAINTING. IT PROVOCATIVELY JUXTAPOSES A DELICATE TEACUP AND SANDWICH WITH BRASS KNUCKLES, TOPPED BY WHIPPED CREAM AND A CHERRY. THE ARTIST CHALLENGES PERCEPTIONS OF COMFORT AND AGGRESSION IN A SINGLE, STRIKING IMAGE.**



# Cristina Callero



**"FRIDA"**  
**WATERCOLOR ON PAPER**  
**30 X 40 CM**  
**€ 350,-**

**I CARE ABOUT LOOKS THAT EXPRESS A FEELING. WHEN PAINTING AN ANIMAL OR A FACE, I LIKE TO GIVE THE EYES THE SPOTLIGHT THAT CAPTURES THE VIEWER AND MAKES THEM REFLECT ON WHAT THEY CONVEY.**



**"BLUE DOOR"**  
**WATERCOLOR ON PAPER**  
**20 X 30 CM**  
**€ 250,-**



**"FISHING BOAT WITH CLOUDY SKY"**  
**WATERCOLOR ON ARCHES PAPER 300G FINE GRAIN 100% COTTON**  
**31 X 41 CM**  
**€ 280,-**



# De la Serna



**"QUIET"**  
**OIL ON CANVAS**  
**100 X 50 CM**  
**€ 1.870,-**

**THIS PAINTING OF A CLASSICAL FEMALE SCULPTURE SITUATED IN A NATURAL SETTING BLENDS MARBLE WITH THE VITALITY OF THE LANDSCAPE.**

**THE NUDE FIGURE, WITH HER BACK TO THE VIEWER, CONVEYS A SENSE OF INTIMACY AND CONTEMPLATION. THE GESTURE OF HOLDING THE CLOAK SUGGESTS BOTH MODESTY AND MOVEMENT, FROZEN IN THE STONE. THE LIGHT PASSING THROUGH THE FOLIAGE HIGHLIGHTS THE SCULPTURE'S VOLUMES, CREATING A CONTRAST BETWEEN THE STATIC AND THE EPHEMERAL.**

**THE WATER IN THE POND ACTS AS A MIRROR, REINFORCING THE IDEA OF ILLUSORY AND TRANSIENCE.**

**A DIALOGUE IS PERCEIVED BETWEEN NATURE AND ART, BETWEEN HUMAN CREATION AND THE ETERNAL SURROUNDINGS.**

**THE PICTORIAL TEXTURE MANAGES TO MIMIC THE COLDNESS OF THE MARBLE WITH THE WARMTH OF THE OIL. THE COMPOSITION INVITES SERENE CONTEMPLATION, AS IF TIME HAD STOPPED.**

**THE VIEWER WITNESSES A MOMENT SUSPENDED BETWEEN REALITY AND THE IDEAL. IN SHORT, THE PAINTING TRANSFORMS THE STATUE INTO A LIVING BEING WITHIN A POETIC SETTING.**



**"INTIMATE HUG"**  
**OIL ON CANVAS**  
**65 X 54 CM**  
**€ 1.500,-**

**IT CONVEYS A VARIETY OF MESSAGES RELATED TO SELF-LOVE, EMPOWERMENT, EMOTIONAL INDEPENDENCE, AND IDENTITY EXPLORATION. THE SPECIFIC INTERPRETATION AND PERCEPTION WILL DEPEND ON THE VIEWER.**

**IT CONVEYS A MESSAGE, SHOWING THE WOMAN AS STRONG AND SELF-SUFFICIENT. THE GESTURE OF EMBRACING HERSELF COULD BE AN EXPRESSION OF AUTONOMY AND SELF-CONFIDENCE.**

**IT SYMBOLIZES A MESSAGE OF SELF-LOVE AND PERSONAL ACCEPTANCE, A REPRESENTATION OF THE IMPORTANCE OF TAKING CARE OF ONESELF AND FINDING HAPPINESS FROM WITHIN.**



# Faiza Shaikh



**“NOOR”**  
**OIL AND SILVER LEAF ON**  
**CANVAS**  
**70 X 55 CM**  
**€ 2.500,-**



**“SILVER STAIRCASE”**  
**OIL AND SILVER LEAF ON CANVAS**  
**70 X 55 CM**  
**€ 2.500,-**

FAIZA SHAIKH'S ARTISTIC JOURNEY BEGAN EARLY, LEADING HER TO PRESTIGIOUS INSTITUTIONS LIKE ST. MARTINS COLLEGE IN LONDON. HER PAINTINGS EXPLORE THEMES OF PHILOSOPHY, POLITICS, POETRY, AND ECONOMICS. A DISTINCTIVE FEATURE OF HER WORK IS THE USE OF GOLD AND SILVER LEAF, WHICH OFTEN CARRIES A PHILOSOPHICAL MESSAGE. HER ART SEEKS PERFECTION AND BEAUTY, DRAWING INSPIRATION FROM THE WORLD WITHOUT EXPLICITLY SHOWING ITS CONTEXT. SHE HAS DEVELOPED A UNIQUE TECHNIQUE TO TRANSFORM HER CANVASES INTO RICH, VELVETY TEXTURES. HER WORK STRIKES VIEWERS WITH ITS BOLD COLORS, SHARP CONTRASTS, AND A SENSE OF POWER AND MODERNITY.

**STATEMENT**

**“ I PAINT THE PHILOSOPHY I MEDITATE UPON. I USE TEXTS FROM DIFFERENT PHILOSOPHIES TO REPRESENT THE UNIVERSALITY OF THEIR IDEAS. ”**



**"PROSPERITY"**  
OIL AND GOLD IN ACRYLIC BOX  
40 X 55 CM  
€ 2.500,-



**"FASHION DOLL"**  
OIL ON CANVAS  
60 X 80 CM  
€ 2.000,-



**"ENLIGHTENED"**  
OIL AND GOLD LEAF ON CANVAS  
80 X 80 CM  
€ 2.500,-



# Felipe Costa



**“TRANSCENDENCE  
AT THE COAST”  
OIL ON CANVAS  
80 X 60 CM  
€ 869.-**

MY ART IS AN INVITATION TO AWAKEN CONSCIOUSNESS THROUGH THE EXPLORATION OF NATURE'S ENERGY AND THE INTERCONNECTEDNESS OF ALL THINGS. THROUGH VIBRANT COLORS AND EXPRESSIVE BRUSHSTROKES, I CAPTURE THE ENERGY OF LANDSCAPES. IT'S A MEDITATIVE EXPERIENCES THAT CONNECT VIEWERS TO A DEEPER SENSE OF PEACE AND JOY. MY PAINTINGS ARE AN INSPIRATION TO BRING AWARENESS AND LIVE IN THE PRESENT MOMENT, TO SLOW DOWN AND APPRECIATE THE BEAUTY THAT SURROUNDS US. INSPIRED BY MY SPIRITUAL JOURNEY, I BELIEVE ART CAN BE A TOOL FOR TRANSFORMATION, HELPING VIEWERS CONNECT WITH THEIR INNER SELVES AND THE WORLD AROUND THEM TO DEVELOP A PURPOSEFUL LIFE.

TRANSCENDENCE AT THE COAST IS MORE THAN A PAINTING; IT'S A MEDITATION BY THE SEA. CAPTURING THE STILLNESS WHERE LAND MEETS WATER, THIS PIECE REFLECTS THE BELIEF THAT TRUE PEACE IS FOUND WITHIN, NOT OUT IN THE WORLD. EACH BRUSHSTROKE IS AN INVITATION TO LET GO OF CONTROL, QUIET THE MIND, AND TRANSCEND THE EGO. BY CONTEMPLATING THE UNION OF THE OCEAN AND THE SHORE, WE ARE REMINDED THAT BY ELEVATING OUR CONSCIOUSNESS, WE CAN FIND THE PERFECTION AND BEAUTY THAT EXISTS EVERYWHERE.



**"EDGE OF STILLNESS"**  
**OIL ON CANVAS**  
**80 X 60 CM**  
**€ 869.-**

**"SUNKEN  
SPLENDOR"**  
**ACRYLIC ON  
CANVAS**  
**92 X 73 CM**  
**€ 1.100.-**



**"SUNKEN SPLENDOR," A CAPTIVATING PAINTING THAT CELEBRATES THE BREATHTAKING BEAUTY AND RICHNESS OF THE CORAL REEF ECOSYSTEM. SUNLIGHT FILTERS THROUGH THE WAVES, ILLUMINATING THE CORALS IN A DAZZLING DISPLAY OF BLUES AND GREENS. THIS IS AN INVITATION TO EXPLORE THE WONDERS OF THE UNDERWATER WORLD AND FIND BEAUTY IN EVERY CORNER OF LIFE. GO EXPLORE, SEEK OUT BEAUTY, AND EMBRACE THE RICHNESS OF LIFE. WE ARE ENOUGH, AND EVERY EXPERIENCE, GOOD OR BAD, SHAPES OUR JOURNEY. CHOOSE HOW YOU REACT TO LIFE, LET GO OF NEGATIVITY, AND LIVE EACH DAY TO THE FULLEST.**

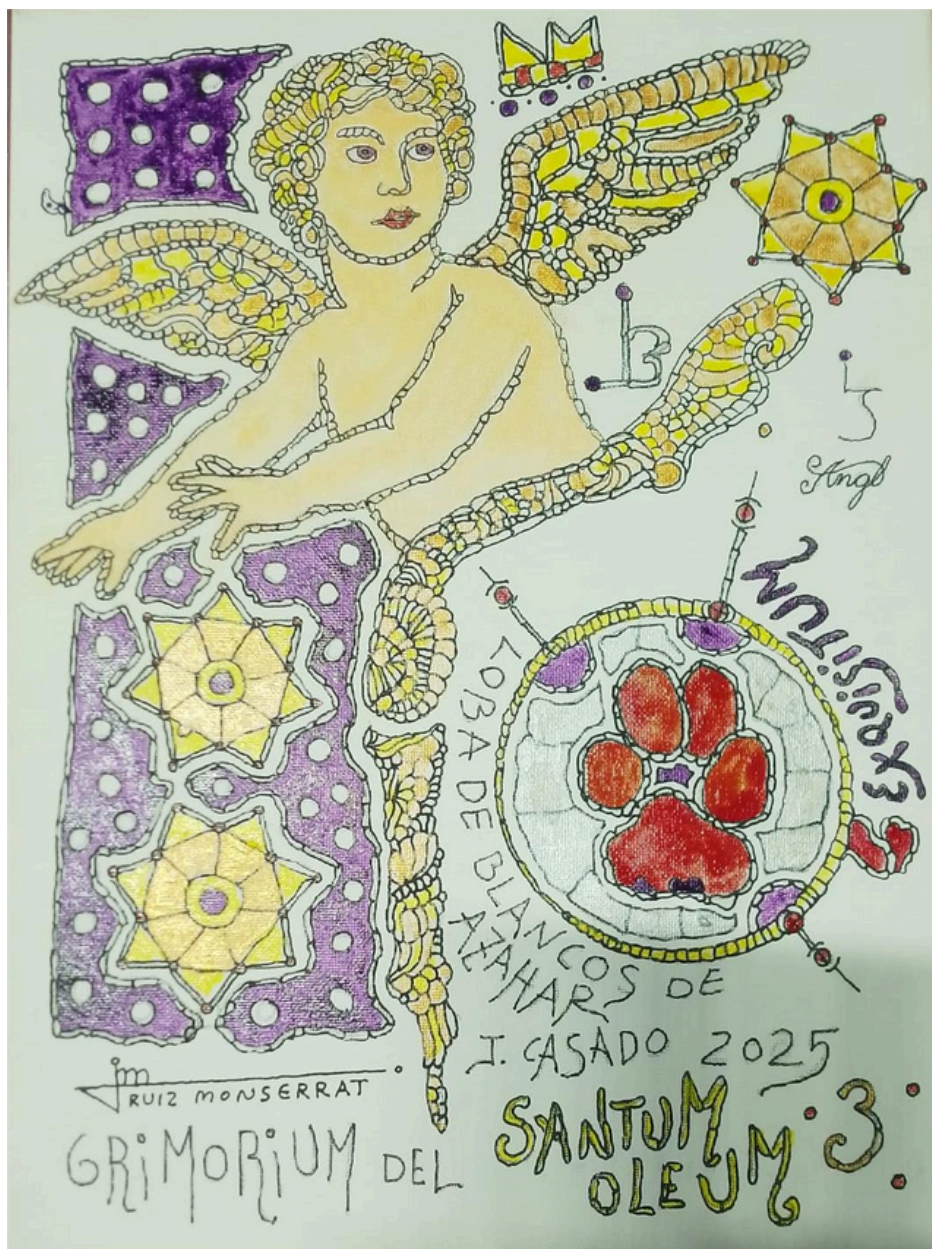


# José Manuel Ruiz Monserrat



**"CLAY BODY"**  
30 X 40 CMS  
OIL ON CANVAS  
€ 1.200,-

Inmaculada Casado  
Loba de Blancos de Azahar  
Ángel del Río  
José Manuel Ruiz Monserrat



**"GRIMORIUM DEL SANTUM OLEUM"**

**30 X 40 CM**

**ACRYLIC ON CANVAS**

**€ 1.200,-**



# Josefica

(1924-2002)



**"POND"**  
OIL ON BOARD  
35 X 30 CM  
€ 4.670,-

THE WORK OF JOSEFINA GIL ESCÁMEZ, "JOSEFICA," IS CHARACTERIZED BY THE DEPICTION OF LANDSCAPES, FIGURES, AND FLORAL MOTIFS, WHERE THE MATERIAL TAKES CENTER STAGE. HER EXPRESSIVE USE OF THE BRUSH AND PALETTE KNIFE GENERATES A UNIQUE TACTILE RICHNESS, IMBUING HER CREATIONS WITH A DENSE FORMAL SOLIDITY. HOWEVER, THIS SOLIDITY IS TRANSCENDED BY A LYRICAL SENSIBILITY, WHICH ENVELOPS HER COMPOSITIONS IN A MAGICAL, ALMOST TURNER-ESQUE ATMOSPHERE, ETCHED IN THE VIEWER'S RETINA. (BASILIO GASENT, ART CRITIC FOR RADIO MADRID). JOSEFICA'S EXTENSIVE OUTPUT REVEALS A DIVERSITY IN BOTH TECHNIQUE AND SUBJECT MATTER. HER STYLE IS IMBUED WITH A MYSTERIOUS ROMANTICISM, WITH CLEAR INFLUENCES FROM THE ENGLISH PAINTING TRADITION, ESPECIALLY IN HER SEMI-VEILED LANDSCAPES, WHERE LIGHT AND ATMOSPHERE PLAY A VITAL ROLE. (J.R. LÓPEZ DE LOS MOZOS, WRITER, RESEARCHER, AND POET). HER PAINTING REFLECTS A CONSTANT SEARCH FOR NEW FORMS OF EXPRESSION. THROUGH HER WORK, SHE INVITES US ON A JOURNEY WHERE HER CREATIVITY IS CONSTANTLY REINVENTED.

HER PERSONALITY AND HUMANITY UNFOLD IN EVERY STROKE, EXPLORING NEW PATHS AND STYLES WITH A TIRELESS DESIRE TO CONVEY EMOTIONS. IN HER PAINTING, FANTASY NEVER ABANDONS HER, SURPRISING US WITH EACH NEW CREATION, ALWAYS MARKED BY HER UNMISTAKABLE STYLE. (FLORENCIO GALINDO, PHD IN FINE ARTS, COMPLUTENSE UNIVERSITY OF MADRID). THROUGHOUT HER CAREER, JOSEFICA EXHIBITED HER WORK IN VARIOUS SOLO EXHIBITIONS IN MADRID, GUADALAJARA, CARTAGENA, AND MURCIA, LEAVING AN INDELIBLE MARK ON EACH ONE. THIS EXHIBITION DELVES INTO HER PICTORIAL UNIVERSE, WHERE LANDSCAPE AND COLOR COME ALIVE WITH THEIR OWN IDENTITY, ALLOWING US TO DISCOVER THE ESSENCE OF HER ART AND THE DEPTH OF HER CREATIVE VISION.



**"STILL LIFE"**  
**OIL ON CANVAS**  
**45 X 60 CM**  
**€ 5.360,-**



# Equipo Linea Viva

Montse Lucas & Rafa Alonso



**"POP GREEN SHOOTS"**

**ACRYLIC ON CANVAS**

**90 X 90 CM**

**€ 1.750,-**

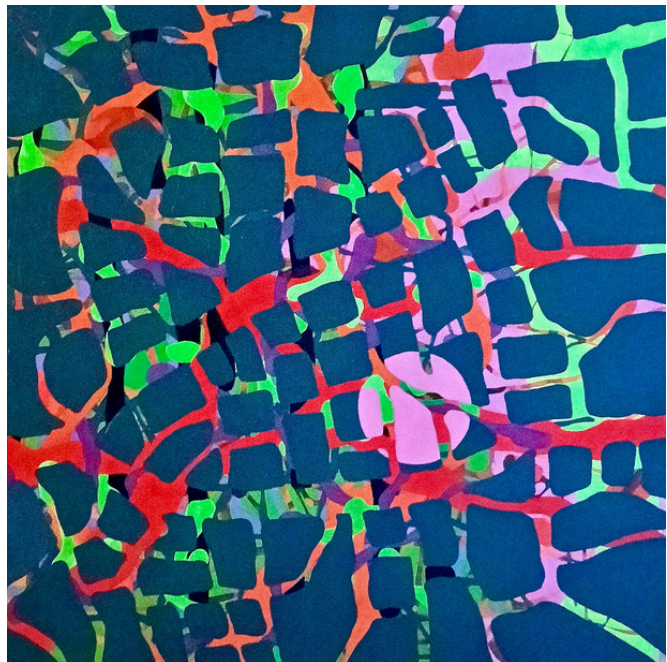


**THE ARTIST COUPLE FROM THE LÍNEA VIVA TEAM (MONTSE LUCAS & RAFA ALFONSO) LOVE THE FREEDOM OF NATURE AND IN THIS WORK "GREEN SHOOTS POP," THEY HAVE CAPTURED THE COLOR, LIGHT, HARMONY, AND MOVEMENT OF LIFE.**



**"PINK MOON I"**  
**ACRYLIC ON CANVAS**  
**90 X 90 CM**  
**€ 1.750,-**

**"PINK MOON II"**  
**ACRYLIC ON CANVAS**  
**90 X 90 CM**  
**€ 1.750,-**



**THE ARTIST COUPLE FROM THE LÍNEA VIVA TEAM (MONTSE LUCAS & RAFA ALFONSO) LOVE THE FREEDOM OF NATURE AND IN THIS WORK "GREEN SHOOTS POP," THEY HAVE CAPTURED THE COLOR, LIGHT, HARMONY, AND MOVEMENT OF LIFE.**



# Lourdes Suárez



**"REBIRTH"  
ABSTRACT  
ALCOHOL INK ON  
CANVAS  
80 X 60CM  
€ 1150.-**

**"REBORN" - THIS WORK REPRESENTS IMPROVEMENT THROUGH THE FLUIDITY OF WATER AND THE FRESHNESS OF GREEN, SYMBOLIZING GROWTH AND RENEWAL. THE WHITE STROKES EMERGE AS CLEAR PATHS AMONG THE STORM OF COLORS, REMINDING US THAT THERE IS ALWAYS LIGHT AND DIRECTION IN THE MIDST OF CHAOS. EACH SPOT AND LINE IS A STAGE OF TRANSFORMATION, A STEP TOWARDS RESILIENCE AND PERSONAL EVOLUTION.**

**PAINTING OR THE FEAST OF EMOTIONS.**

**AS SOON AS SHE COULD, LOURDES SUÁREZ DIRECTED HER STUDIES TOWARDS THE WORLD OF BEAUTY, COLOR AND THE TRANSMISSION OF SENSATIONS THROUGH IMAGES.**

**SHE SOON BEGAN HER PROFESSIONAL CAREER, WORKING ON COUNTLESS PROJECTS AND SECTORS, WITHOUT EVER GIVING UP HER PRINCIPLES AND PRIORITIES REGARDING AESTHETICS, BEAUTY AND ART. PAINTING FOUND LOURDES PREPARED TO EXPRESS SO MANY THINGS, WHICH SOON BECAME INSEPARABLE. IMMEDIATELY SHE BEGAN THE PARTY OF EMOTIONS.**

**STOPPING PAINTING INVOLVES TRYING, FAILING, GETTING IT RIGHT, EXPRESSING, EXPLORING, SHARING. "SUÁREZ'S WORK IS CHARACTERIZED BY THE USE OF RADIANT COLORS ON THE CANVAS AND BY THE CURVILINEAR RHYTHM THAT MARKS EACH OF HER CREATIONS."**



**"TIDE OF DREAMS"**  
**ABSTRACT, CANVAS**  
**WOOD**  
**ALCOHOL, RESIN INKS**  
**50 X 50 CM**  
**€ 950.-**



**"TIDE OF DREAMS"**  
**ABSTRACT, CANVAS**  
**WOOD**  
**ALCOHOL, RESIN INKS**  
**50 X 50 CM**  
**€ 950.-**



# Luisa María



**"PAN-AMAZONIAN" (FRONT)  
GRASS VARNISH  
€ 1.480.-**

° IT IS NOT PAINT, IT IS GRASS VARNISH °

IN THE WORKS THERE IS NO PICTORIAL INTERVENTION, IT IS NOT PAINTING AND THERE ARE NO BRUSHSTROKES. THIS IS A CREATION THAT WAS BORN AFTER MY OWN PROCESS OF RESEARCH, EXPERIMENTATION AND CREATION WITH THE VARNISH OF PASTO, DECLARED INTANGIBLE CULTURAL HERITAGE OF HUMANITY REQUIRING URGENT SAFEGUARDING MEASURES BY UNESCO. THIS IS A UNIQUE TECHNIQUE IN THE WORLD THAT IS WORKED ON IN MY CITY, SAN JUAN DE PASTO, COLOMBIA. GRASS VARNISH IS A NATURAL RESIN THAT COMES FROM THE MOPA-MOPA TREE WHICH IS FOUND IN THE JUNGLE OF PUTUMAYO AND THE AMAZON, IN SOUTHERN COLOMBIA. IT IS HARVESTED ONLY TWICE A YEAR, SO ON THESE OCCASIONS IT MUST BE SUPPLIED WITH MATERIAL FOR THE WHOLE YEAR AND IT GOES THROUGH AN ARDUOUS, RIGOROUS AND VALUABLE PROCESS UNTIL IT IS WORKED ON THE WORKS. THE ONLY TOOLS I HAVE USED TO CAPTURE THE WORKS ARE MY HANDS AND MOUTH. IT IS NOT POSSIBLE TO OBTAIN THE SAME WORK AGAIN, NOT EVEN A FRAGMENT OF IT, EVEN IF ONE WISHES.

THESE WORKS ARE RELATED TO THE "PATCHWORK TAPESTRY" THAT REFERS TO THE SHAPE AND GEOGRAPHICAL IMMENSITY OF MY TERRITORY (NARIÑO, COLOMBIA). ON THE OTHER HAND, "ANDEAN WISDOM" IS RELATED TO THE COSMIC CHURO, WHICH HAS A WIDE AND IMPORTANT MEANING IN THE CULTURE OF MY REGION. IT IS PRECISELY RELATED TO THE IMPORTANCE OF THIS ANDEAN WISDOM, OF THE ROOTS OF THE REGION AND THE ANDEAN CULTURE. IT ALSO REFERS TO LIFE, BALANCE AND THEREFORE OPPOSITES. ON THE OTHER HAND, "PANAMAZÓNICA" HAS A DEEP RELATIONSHIP WITH THE RICHNESS OF COLOR IN THE IMMENSE GEOGRAPHICAL, NATURAL AND CULTURAL DIVERSITY OF MY TERRITORY, WHICH IS THE ONLY DEPARTMENT IN COLOMBIA THAT HAS THREE REGIONS: THE ANDEAN, THE PACIFIC AND THE AMAZON. HE ALSO HIGHLIGHTED THAT COLOMBIA IS ONE OF THE 9 COUNTRIES THAT BELONGS TO THE PAN-AMAZON REGION AND THE ANDEAN-AMAZONIAN GROUP AND THAT THE RESIN WITH WHICH THIS WORK WAS CREATED IS HARVESTED IN THE JUNGLE OF PUTUMAYO AND THE AMAZON, WHERE IN TURN, THE COLOR IN THIS NATURAL, CULTURAL AND GEOGRAPHICAL DIVERSITY IS MAGNIFICENT. ALL OF THE ABOVE, IN ADDITION, HAS BEEN A SOURCE OF INSPIRATION AND OF GREAT RELEVANCE FOR MY OWN CREATIVE PROCESS AND OF COURSE FOR THIS WORK. THIS CREATION ALSO MIXES THIS "PATCHWORK TAPESTRY" WITH THE OVERFLOWING JOY OF THE CARNIVAL OF BLACKS AND WHITES (DECLARED CULTURAL AND INTANGIBLE HERITAGE OF HUMANITY BY UNESCO), OF WHICH I HAVE ALSO BEEN PART FROM A VERY EARLY AGE AND WHICH FROM OUR IMAGINATION LEADS US TO DREAM OF A WORLD OF COLORS. AS A RESULT OF THIS LINK, MY WORKS ARE BORN WRAPPED IN TRADITION AND CUSTOMS THAT IDENTIFY ME AS PART OF AN EXTENSIVE PAN-AMAZONIAN TERRITORY IN THE SOUTH OF COLOMBIA, WHERE WORLD HERITAGE IS INTEGRATED AND CREATES A PATH OF ART THAT CONTRIBUTES TO THE CONSTRUCTION OF PEACE.

# José Blesa Blasco



**"DESOLATION"**

**80 X 60 CM - 2023**

**MIXED TECHNIQUE OIL WITH ARIÑO CHARCOAL**

**€850,-**



EN CONTEMPLACIÓN, JOSÉ Blesa Blasco plasma un paisaje árido de montaña bajo un cielo rojizo que vibra entre el fuego y la calma. Su innovadora técnica —una fusión de óleo con carbón de lignito extraído de las minas de su tierra— confiere a la obra una textura única, casi orgánica, que transforma la superficie en materia viva.

El artista convierte el paisaje en un acto de introspección: cada trazo, cada quemadura del pigmento, parece contener el pulso del territorio. La tierra seca y el cielo incandescente se encuentran en un equilibrio silencioso, donde el color deja de ser solo luz para convertirse en emoción.

Blesa nos invita a detenernos, a mirar con serenidad el diálogo entre lo efímero y lo eterno, recordándonos que la contemplación también es una forma de habitar el mundo.



# Luiz Campoy



**"SLIDING"**  
H= 48 X 15 X 11 CM  
STAINLESS STEEL TUBES CUT  
IN HALF AND WELDED.  
ROUND TUBE BASE, FULLY  
POLISHED.  
€ 3.320,-

**MY INSPIRATION IS ALWAYS TO TAKE ADVANTAGE OF DISCARDED AND FORGOTTEN MATERIALS IN JUNKYARDS AND TRANSFORM THEM INTO WORKS OF ART. THIS PARTICULAR PIECE WAS PRECISELY THAT: FORGOTTEN PIPES, DISCARDED LIKE WORTHLESS TRASH. I BROUGHT THEM BACK TO MY STUDIO AND TRANSFORMED THEM INTO A WORK OF ART CALLED "SLIDING."**



**"SOFT"**

**H= 72 X 25 X 15 CM**

**WELDED AND POLISHED STAINLESS  
STEEL STRIPS WITH PAINTED  
APPLIQUÉS**

**€ 3.200,-**

**LUZ CAMPOY IS A BRAZILIAN ARTIST, CIVIL ENGINEER, AND BUSINESS MAN, BORN IN SÃO CAETANO DO SUL - SÃO PAULO . HE WAS AWAKENED TO ART AT THE AGE OF 14 WHEN HIS CONNECTION WITH IT EMERGED AS A HOBBY. HIS CIVIL ENGINEERING KNOWLEDGE CONTRIBUTED SIGNIFICANTLY TO HIS CRIATIONS AND HIS ART'S EVOLUTION. LUIZ'S ADMIRERS ARE SOURCES THAT MOTIVATE HIM TO CREATE. THE EXPOSURE TO SOCIAL NETWORKS WAS THE GATEWAY TO THE FIRST INVITATIONS TO EXHIBIT HIS ARTWORK IN BRAZIL AND ABROAD.**



# Mahi Wasfy



**"CLOUDS OVER LAND"**  
**100 X 100 CM**  
**OIL ON CANVAS**  
**€ 1.580,-**



**"CLOUDS DURING THE DAY"**

**100 X 100 CM**

**OIL ON CANVAS**

**€ 1.580,-**

**THESE PAINTINGS SHOW CALM SCENES WITH LARGE, SOFT CLOUDS FLOATING OVER THE LAND. THE SKY IS PAINTED WITH FAST AND LOOSE BRUSHSTROKES, GIVING IT A LIGHT AND AIRY FEEL. IN CONTRAST, THE TREES, GRASS, AND LAND ARE PAINTED WITH THICKER, TEXTURED STROKES TO SHOW THEIR SOLID, TOUGH NATURE. THE COLORS, ALONG WITH THE BIG CLOUDS, CREATE A FEELING OF PEACE AND OPENNESS. THE CONTRAST BETWEEN THE HEAVINESS AND LIGHTNESS IS WHAT CAPTURES THE ESSENCE OF NATURE'S BEAUTY, CREATING A BALANCE AND HARMONY THROUGH DIVERSITY.**



# Manuel Grau-Carod



**"FANTASTIC SCENE"**

**50 X 70 CM**

**ACRYLIC ON PAPER**

**€560,-**

**THE MAGIC OF COLORS CREATES A LANDSCAPE AS REAL AS IT IS FANCIFUL, WHERE THE ARTIST HIGHLIGHTS THE POWER OF AN ANIMAL RIDDEN BY A FEMALE FIGURE, BURSTING INTO NATURE AS UNTAMABLE AS THE ANIMALS THEMSELVES.**

**MANUEL, A CARTOONIST, ILLUSTRATOR, AND WATERCOLORIST, IS CONSIDERED AN ESTABLISHED SPANISH ARTIST.**

# LuzMa Berganza Arriaga



**"COBALTO"**  
**OIL ON CANVAS**  
**160X110CM**  
**€ 8.000,-**

**COBALT IS THE MOMENT BEFORE BREAKING.**

**THAT SECOND SUSPENDED IN THE AIR WHERE THE INTERNAL STRUGGLE BECOMES UNBEARABLE, WHERE RESISTANCE FRAGMENTS AND GRAVITY—EMOTIONAL AND PHYSICAL—CLAIMS ITS RIGHT.**

**ON THE CANVAS, AN ANGEL TRAPPED BETWEEN STRENGTH AND SURRENDER SPINS WITHIN A WHIRLWIND OF VIOLENT BLUE. HER BODY DOESN'T FALL: IT GIVES WAY, AS THE SOUL GIVES WAY WHEN IT CAN NO LONGER HOLD ON, BUT STILL IT DOESN'T FADE AWAY.**

**THIS PAINTING WAS PAINTED IN RELENTLESS EARLY MORNINGS, ON NIGHTS WHEN I BECAME OBSESSIVE, WHERE I INDUCED MYSELF TO THE DEEPEST PAIN SO I COULD TRANSFORM DESTRUCTION INTO SOMETHING TANGIBLE. IT WASN'T JUST A WORK OF ART: IT WAS A BATTLE.**

**EVERY STROKE IS AN OPEN FISSURE, EVERY BLEND OF COLOR IS AN ECHO OF MY OWN ABYSS.**

**COBALT IS CONTRADICTION MADE INTO AN IMAGE:**

**SURRENDER AND THE INSTINCT TO CLING, THE FALL AND THE FIRE THAT BURNS EVEN AS EVERYTHING CRUMBLES.**

**IT'S MY REFLECTION: EVEN ON THE EDGE OF THE PRECIPICE, MY SOUL IS NOT EXTINGUISHED.**

**IT BURNS WITH THE SAME INTENSITY.**



# Miguel Ángel Santos



**"THE PRYING EYE"**  
ACRYLIC ON  
CARDBOARD CUT  
AND MOUNTED IN  
LAYERS  
40 X 50 CM  
€ 1.200,-

**BORN IN CÓRDOBA, ARGENTINA, HE TRAINED AS A SELF-TAUGHT ARTIST AS A YOUNG MAN, BEGINNING TO EXPLORE VARIOUS DRAWING TECHNIQUES. HE BECAME INTERESTED IN REALISM, AND PARTICULARLY SURREALISM, FROM A VERY EARLY AGE, UNTIL HE ENROLLED AT THE FIGUEROA ALCORTA SCHOOL OF FINE ARTS, WHERE HE PURSUED A DIPLOMA IN ENGRAVING.**

**AMONG THE WORK OF THIS VERSATILE ARTIST ARE CERAMIC MURALS, PRINTS, SCULPTURES, AND INK DRAWINGS, ALL EXECUTED ON DIFFERENT SUPPORTS AND USING DIVERSE MATERIALS AND TECHNIQUES, GIVING HIS WORK A VERY DISTINCTIVE VISION OF HIS HOMETLAND AND ITS VOICES, WHICH HE HAS EXHIBITED IN VARIOUS NATIONAL AND INTERNATIONAL EXHIBITIONS SINCE 1980.**



**"THE SACRED CRY"**  
53 X 43 CM  
MARKERS ON PAPER  
€ 650,-



# Michele Ardito



**"IF YOU FREE HIM WILL HE DIE?"**

**OIL ON CANVAS**

**40 X 40 CM**

**2025**

**€ 950,-**

**THIS ITALIAN ARTIST BORN IN MATERA AND CURRENTLY LIVING IN MILAN IS "BACHELOR OF MODERN LITERATURE WITH AN ANTHROPOLOGICAL ORIENTATION" AND WAS ALSO A STAGE COLLABORATOR AND GENERAL DIRECTOR IN THE CREATION OF DANCE-THEATER SHOWS WITH THE ITALIAN-FRENCH CONTEMPORARY DANCE COMPANY "CIE EZIO SCHIAVULLI".**

**ALL THIS CULTURAL BAGGAGE THAT ACCOMPANIES HIM IS TRANSFERRED TO HIS PICTORIAL WORKS. IN HIS WORDS... "AS A TEENAGER I CAME ACROSS PAINTING AND I KNEW THE SURREALIST POSSIBILITIES IT OFFERED ME. I IMAGINED TRAVELING THROUGH THE VEINS OF LEAVES, IN THE BARK OF TREES, MY MIND IMAGINED FANTASTIC ANIMALS AND ANTHROPOMORPHIC CREATURES IN UNREAL LANDSCAPES AND SITUATIONS AND I REPRODUCE ALL THAT ON CANVAS."**

**HIS PAINTINGS ARE METAPHORS OF THE HUMAN CONDITION OR VISIONS OF REALITY TRANSFORMED BY HIS UNCONSCIOUS. HIS BALANCED COMPOSITIONS CONTRAST WITH THE SURREALISM OF HIS IMAGES. A FIGURATION SO DETAILED AND PRECISE THAT IT INVITES US TO IMMERSE OURSELVES IN THE ENIGMATIC DREAMLIKE UNIVERSE OF THE ARTIST, WHILE WE OBSERVE HIS CREATIONS ABSORBED TO CONSIDER SCENARIOS, CREATURES, FANTASTIC BEINGS AND NATURAL SETTINGS THAT ARE AS REAL AS THEY ARE DISCONCERTING FOR OUR SENSES.**



**"MIGRATIONS"**  
**OIL ON CANVAS**  
**30 X 30 CM**  
**2025**  
**€ 1100,-**



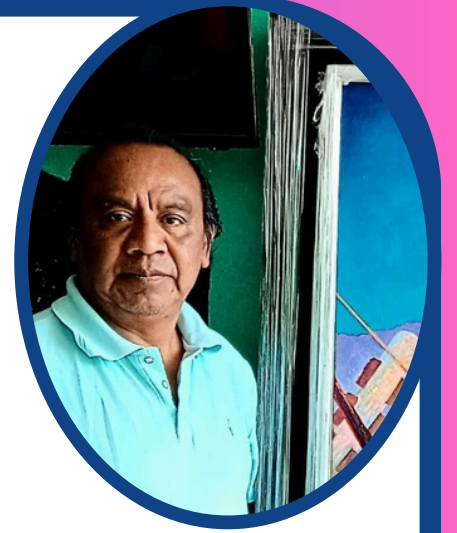
**"FROM FREEDOM AND A THIN STEM"**  
**OIL ON CANVAS**  
**30 X 30 CM**  
**2025**  
**€ 1100,-**

IMAGINA QUE REDIMENSIONAS TANTO QUE PUEDES VIAJAR POR EL INTERIOR DE UNA HOJA, POR SUS VENAS, FLOTAR EN LA SAVIA, ENTRAR EN UNA CÉLULA Y BAILAR CON LAS PARTÍCULAS MÁS PEQUEÑAS, HASTA SER TÚ MISMO UNA DE ELLAS. AHORA ERES DIMINUTO: EMPIEZAS A DARTER CUESTA DE QUE LO INFINITAMENTE PEQUEÑO PUEDE CONTENER LO INFINITAMENTE GRANDE, YA NO EXISTE LA FÍSICA, EL ESPACIO NI EL TIEMPO TAL Y COMO LOS CONOCEMOS. ESTÁS CONECTADO A TODO EL UNIVERSO, ERES EL TODO, ESTÁS DENTRO, ESTÁS EN TU CASA.

TE DAS CUENTA DE CUÁNTO SE PARECE TODO: EL DELTA DE LOS GRANDES RÍOS A LA SANGRE QUE FLUYE POR LAS VENAS, LAS FLORES SE ABREN EN ESPIRAL COMO GALAXIAS EN MOVIMIENTO, Y LAS ESTRELLAS BRILLAN, COMO EL IRIS DE UNOS OJOS MULTICOLORS, TODO ESTÁ CONECTADO POR UNA RED CÓSMICA IDÉNTICA A LA RED NEURONAL DE TU CEREBRO.



# Moisés Martínez Ramírez



**PROJECT: SAN JOAQUÍN.  
"SACRED JEWEL OF THE  
SIERRA GORDA OF  
QUERÉTARO"  
BALLPLAYER  
ACRYLIC ON CANVAS  
96 CM X 156 CM  
2018**

**THE FIGURE OF THE BALLPLAYER STANDS MAJESTICALLY, YET AT THE SAME TIME ADOPTS A CEREMONIAL POSITION. THE RIGHT KNEE TOUCHES THE HORIZONTAL LINE THAT FORMS THE COURT, AND BENEATH IT LIES THE VERY BLOOD OF MOTHER EARTH (CINNABAR), WHICH THEY EXTRACT THROUGH ARDUOUS LABOR. THE LEFT FOOT IS IN PERFECT HARMONY WITH THE CONSTELLATION VIRGO, ASSOCIATED WITH THE BALANCE BETWEEN THE UNDERWORLD, THE EARTHLY AND CELESTIAL REALMS...**

**AND FROM A PERSONAL PERSPECTIVE, DURING THE NIGHTS OF DECEMBER, JANUARY, AND FEBRUARY, THE CONSTELLATION OF ORION ALIGNS WITH THE THREE BALL COURTS THAT EXIST IN THE CITY OF FROGS.**

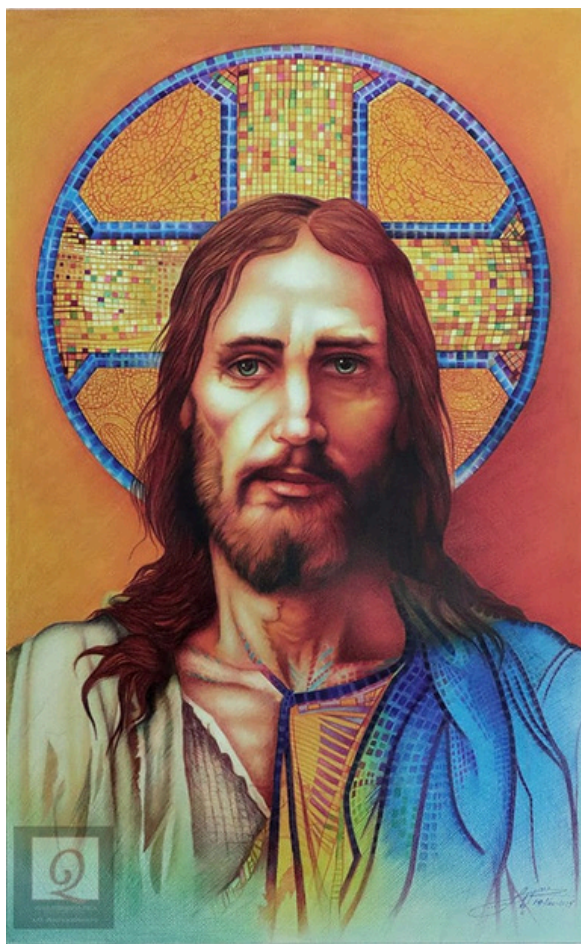


**BALL PLAYERS**  
**ACRYLIC ON CANVAS**  
**75 X 120 CM**  
**2023**



**MASKS AND TRADITION**  
**ACRYLIC ON CANVAS**  
**75 X 120 CM**  
**2019**





**"JESUS, TODAY AND ALWAYS V.1.0 "**  
**MIXED (COLOR PENCILS, INK)**  
**50X70CM**  
**GLICÉE PRINT AVAILABLE €390-**

From the digital canvas of the Holy Shroud, a sacred echo emerges. A work, born of an artistic vision and of one's own life, reveals the face of Jesus, a mirror of infinite goodness and mercy.

On this face, two divine mysteries are intertwined: the martyrdom of the Redemption and the splendor of the Resurrection.

**MICTLANTECUTLI**  
**ACRYLIC ON CANVAS**  
**75X120CM**  
**2020**

Mictlantecutli was not a shadowy or terrifying being; he was a natural force, like the wind that moves the leaves or the rain that falls on the earth. Mictlantecutli is found at the twilight of life, in the rustling of the dry leaves, in the scent of the wet earth.

"Knowing that who we are is never lost, it only transforms."

Mictlantecutli reminds us that life is a journey full of meaning, encounters, and learning. He teaches us that although the soul returns to the sun and the body to the earth, our essence remains in every word, every act, every trace we leave behind.



# The Darkle Workshop



**"KALEIDOSCOPE HEART"  
MIXED TECHNIQUE  
30 X 40 CM  
€ 850.-**

**THIS PIECE IS PART OF A SERIES OF PAINTINGS ABOUT HUMAN CONNECTION. KALEIDOSCOPE HEART'S MAIN THEME IS LOVE THAT IS FELT WITHOUT TOUCH. I HAVE FELT THE MOST LOVED WHEN FRIENDS HAVE ASKED ME TO TEXT THEM WHEN I REACH HOME OR WHEN MY MOM GAVE ME CUT FRUITS WHEN I WAS WORKING. THESE QUIET MOMENTS REMIND ME THAT LOVE IS SOMETIMES FELT MORE THAN WORDS CAN DESCRIBE.**



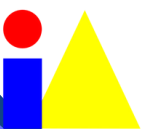
# Saeta



WITH HIS CHARACTERISTIC CRITICAL AND IRONIC STYLE, DANIEL TOMAINO "SAETA" INVITES US TO REFLECT ON CONTEMPORARY SOCIETY AND ITS TENSIONS. AUTHOR OF THE BOOK "CUENTOS PARA REDORDAR QUE NO ESTAMOS MUERTOS" (STORIES TO REMEMBER THAT WE ARE NOT DEAD).

IN THIS WORK, INSPIRED BY THE ICONIC IMAGE OF "I WANT YOU," THE ARTIST UPDATES THE CLASSIC SYMBOL OF POWER AND PROPAGANDA, GIVING IT NEW MEANING BY INCORPORATING THE MASK WITH THE AMERICAN FLAG. THE GESTURE DIRECTLY ADDRESSES THE VIEWER: IT IS NO LONGER JUST A CALL TO PATRIOTIC DUTY, BUT ALSO AN ALLUSION TO TIMES OF PANDEMIC, SOCIAL CONTROL, AND THE FRAGILITY OF OFFICIAL DISCOURSE.

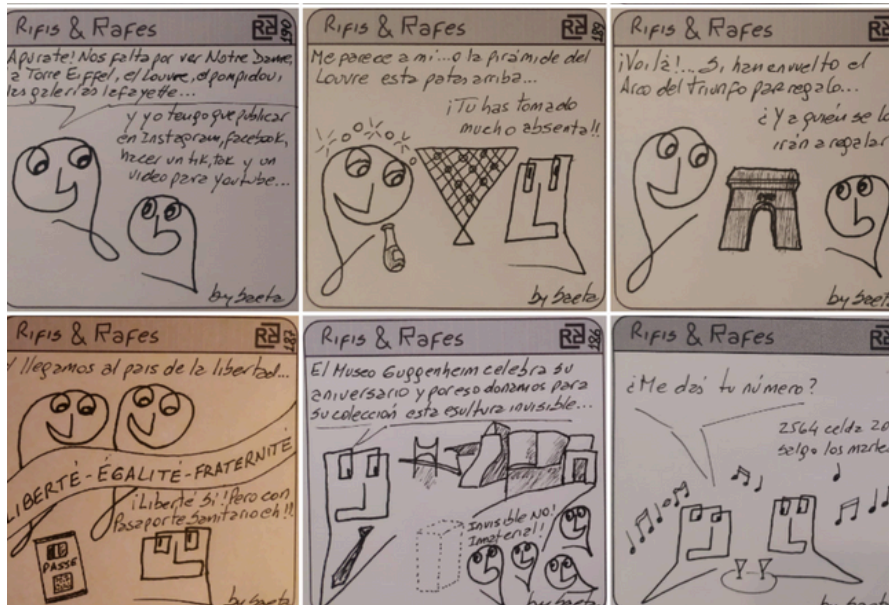
SAETA, ALSO THE AUTHOR OF THE RENOWNED "RIFIS RAFES" (RIFIS RAFES), MAINTAINS IN THIS PIECE THE SAME REBELLIOUS FORCE THAT CHARACTERIZES HIS WORK: A SHARP, IRONIC PERSPECTIVE THAT BLENDS HUMOR, POLITICAL CRITIQUE, AND REFLECTION ON IDENTITY.



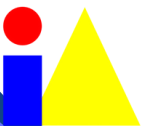


**"RIFIS&RAFES"  
ACRYLIC ON CANVAS**

**@RIFISRAFES**



**THE RIFIS & RAFES ARE TWO TYPES OF CHARACTERS CREATED BY SAETA. RIFIS ARE CREATIVE AND ADVENTUROUS, WHILE RAFES ARE MORE PRACTICAL AND CONVENTIONAL. ALTHOUGH THEY HAVE OPPOSING APPROACHES TO LIFE AND PROBLEMS, THEY CAN COMPLEMENT EACH OTHER. THE SQUABBLES BETWEEN THEM ARE SEEN AS A NATURAL PART OF COEXISTENCE BETWEEN DIFFERENT PERSONALITIES SEEKING HARMONY IN CONTEMPORARY SOCIETY.**



# Nicoline de Lijzer



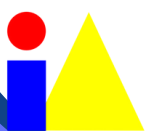
**"LOOK FOR THE DAFFODIL!"**

**ACRYLIC ON ROUND CANVAS (THICKNESS OF CANVAS 3,8CM)**

**Ø 40 CM**

**€ 750,-**

**WHAT INSPIRES ME MOST IN PAINTING TULIPS IS THE COMMITMENT OF THE TULIP FARMERS. THEY USE STRAW TO PROTECT THE BULBS FROM THE COLD IN WINTER. THE STRAW IS THEREFORE AN IMPORTANT PART OF MY PAINTINGS FOR ME.**



# Vishakha Lad

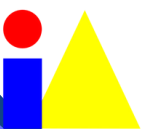


**“RHYTHM OF SISTERHOOD”  
OIL ON PIPAL TREE LEAF  
60X60CM  
€ 750.-**

**PIPAL TREE LEAF PAINTING IS A SACRED LEGACY ROOTED IN REVERENCE FOR NATURE AND THE FINESSE OF INDIAN TRADITION.**

**MATURE PIPAL LEAVES ARE HAND PICKED IN LARGE QUANTITIES AND IMMERSSED IN BARRELS OF WATER FOR 15-20 DAYS. THROUGH GENTLE FERMENTATION, THEIR OUTER LAYERS NATURALLY DISINTEGRATE, REVEALING A FRAGILE LACE-LIKE SKELETON. EACH LEAF IS THEN DELICATELY BRUSHED CLEAN AND DRIED, BEFORE BEING SORTED BY SIZE-FORM, THE MOST SLENDER TO THE BROADEST, EACH CHOSEN TO HARMONIZE WITH THE SUBJECT IT WILL HOLD.**

**THE LEAVES BECOME A LIVING CANVAS. IT IS PAINTED SLOWLY IN LAYERS, A QUIET, MEDITATIVE PROCESS THAT UNFOLDS OVER DAYS. ONCE FRAMED UNDER METHACRYLATE, THESE DELICATE LEAVES REMAIN BEAUTIFULLY PRESERVED FOR YEARS.**



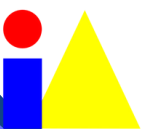
# Yuque



**"THE ACCOUNTANT "**  
**ACRYLIC ON PAPER**  
**40 X 30 CM**  
**€ 290.-**

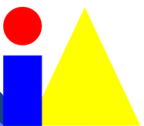
***CUBAN ARTIST YUQUE DEVELOPS A UNIQUE TECHNIQUE THAT FUSES PEN DRAWING WITH ACRYLIC WASHES, GENERATING SCENES OF HIGH VISUAL AND EMOTIONAL IMPACT. HIS WORK MOVES BETWEEN THE SYMBOLIC AND THE NARRATIVE, COMBINING INTENSE STROKES WITH SPLASHES OF COLOR THAT SUGGEST MOVEMENT AND ATMOSPHERE. WITH AN AESTHETIC REMINISCENT OF COMICS, SOCIAL CRITICISM, AND VISUAL POETRY, YUQUE HAS EXHIBITED INTERNATIONALLY, CONSOLIDATING A POWERFUL AND RECOGNIZABLE ARTISTIC VOICE. HIS FIGURES, CHARGED WITH IRONY AND TENDERNESS, COEXIST WITH FANTASTICAL AND CONTEMPORARY ELEMENTS.***

***A CARTOONIST AND ILLUSTRATOR IN THE GRAPHIC ARTS SECTOR, HE MOVES WITHIN THE CONTEMPORARY REALM OF THE VISUAL ARTS AND THE FREEDOM OF THE DREAMER.***





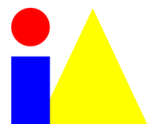
**"AMERICAN GOTHIC"**  
**ACRYLIC ON PAPER**  
**70 X 50 CM**  
**€ 450.-**



# Artistas Participantes

*Paris - Hilversum - Lausanne*

ÁNGEL DEL RÍO  
CHRISTOPHER BROCKLEBANK  
CRISTINA CALLERO  
DE LA SERNA  
DECLAN DAVID  
FAIZA SHAIKH  
FELIPE COSTA  
INMACULADA CASADO  
JOSÉ BLESA  
JOSÉ MANUEL RUIZ MONSERRAT  
JOSEFICA  
LINEA VIVA  
LOBA DE BLANCOS DE AZAHAR  
LOURDES SUAREZ  
LUISA MARÍA  
LUIZ CAMPOY  
LUZMA BERGANZA ARRIAGA  
MAHI WASFY  
MANUEL GRAU-CAROD  
MICHELE ARDITO  
MIGUEL ÁNGEL SANTOS  
MOISÉS MARTÍNEZ RAMÍREZ  
NICOLINE DE LIJZER  
SAETA  
THE DARKLE WORKSHOP (AKANSHA)  
VISHAKHA LAD  
YUQUE



17 au 19

octobre 2025

**PARIS**

CARROUSEL  
DU LOUVRE

LAUSANA  
FOIRE D'ART

**SUIZA**

30 OCT. AU 2 NOV.  
2025

# CATALOGO 2025

October 24-26

**HILVERSUM**

**Países Bajos**

**Carrer de Dante Alighieri 157 / Barcelona**



+34 9 630624976 / 693532137



@Imaginartespai



info@imaginartegallery.com



@imaginarte.bcn

www.imaginartegallery.com